

Human Primary Colon Cancer Cells

A primary cell isolate with application in cell-based screening and life science research

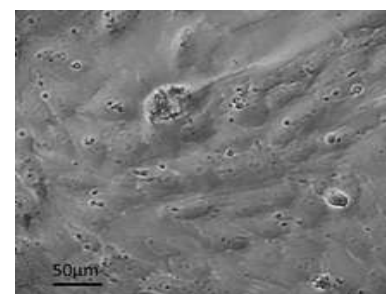
The primary cell isolate was prepared from human tissue obtained with full ethical permission. Tissue was dissected and treated with collagenase and chelation. Cells were propagated in colon cancer culture medium. Cells were banked and cryopreserved under liquid nitrogen. The mixed cell population was analysed by fluorescence-activated flow cytometry.

DONOR TISSUE FEATURES

- Male Caucasian donor, 64 years
- Colon tumour
- Additional donor history available on request

CELL CHARACTERISTICS

| | |
|-----------------------|--|
| Batch number: | 12-0427C |
| Vial content: | 0.5x10 ⁶ cells |
| Appearance: | Large irregular cells |
| Seeding density: | 6,000 cells/cm ² |
| Culture medium: | AvantiCell medium (CE-HCM-01) recommended |
| Recovery from frozen: | 80% |
| Population doubling: | 1-2 days |
| Mycoplasma test: | Negative (by real time PCR) |
| Virus tests: | Negative for HIV1, HIV2, HBV, HCV (by real-time PCR) |
| Other tests: | Negative for yeast, bacteria, fungus |



Cell morphology. Cells in culture were photographed using a phase contrast microscope. (Bar: 50µm)

FLOW CYTOMETRY CELL ANALYSIS

| Cell Marker | Target Description | Population Positive* |
|-------------|--------------------|----------------------|
| CD133 | Stem cell marker | 0.09% |
| CD73 | Tumour cell marker | 99.2% |

*Percentage of cells with fluorescence greater than the isotype control background

USES AND RESTRICTIONS

- Store at -150°C. Once thawed do not re-freeze
- For research use ONLY — not suitable for *in vitro* diagnostic use or human or animal treatment
- Potential biohazard — handle with care

Leaders in Cell Culture