

## Human Primary Lung Tumour Fibroblasts

A primary cell isolate with application in cell-based screening and life science research

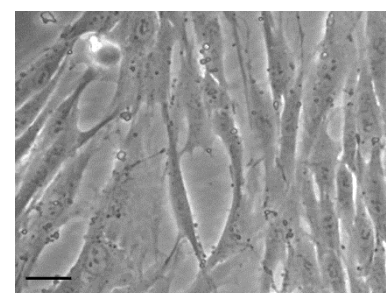
The primary cell isolate was prepared from tissue obtained with full ethical permission. Lung tumour tissue was dissected and dissociated by proteolytic digestion. A fibroblast population was isolated using FSP-1 immuno-magnetic selection and propagated in customised fibroblast culture medium. Cells were banked and cryopreserved under  $-150^{\circ}\text{C}$ . Cell population analysis was performed by fluorescence-activated cell sorting (FACS).

### DONOR TISSUE FEATURES

- Female donor, 83 years
- Lung adenocarcinoma, stage pT2 N0 M0

### CELL CHARACTERISTICS

Batch number:	17-0112
Vial content:	$0.5 \times 10^6$
Appearance:	Monolayer of fibroblast shaped cells
Seeding density:	$12,000/\text{cm}^2$
Culture medium:	AvantiCell medium (LF-HCM-01) recommended
Recovery from frozen:	96%
Doubling time:	2 days
Mycoplasma test:	Negative (by real time PCR)
Virus tests:	Negative for HBV, HCV, HIV1 and HIV2 (by real time PCR)
Other tests:	Negative for fungus, yeast and bacteria



Cell morphology. Cells in culture were photographed using a phase contrast microscope. (Bar:  $50\mu\text{m}$ )

### FLOW CYTOMETRY CELL ANALYSIS

Cell Marker	Target Description	Population Positive*
FSP	Fibroblast surface marker	94%
$\alpha$ -smooth muscle actin ( $\alpha$ -SMA)	Myofibroblast marker	96%

\*Percentage of cells with fluorescence greater than the isotype control background

### USES AND RESTRICTIONS

- Store at  $-150^{\circ}\text{C}$ . Once thawed do not re-freeze
- For research use ONLY — not suitable for *in vitro* diagnostic use or human or animal treatment
- Potential biohazard — handle with care

## Leaders in Cell Culture