

Human Primary Glioblastoma Cancer Cells

A primary cell isolate with application in cell-based screening and life science research

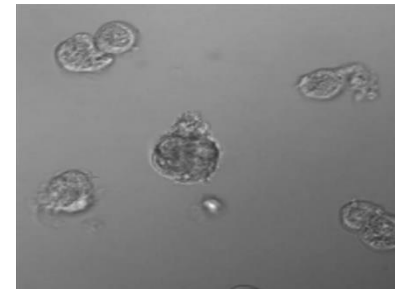
Cat. No. GM-HC-071. The primary cell isolate was prepared from human tissue obtained with full ethical permission. Tissue was dissociated by enzymatic digestion and cells were harvested and washed by conventional filtration and centrifugation. Cells were grown in culture using medium optimised for primary glioblastoma cancer cells, and were banked and cryopreserved under liquid nitrogen. Cell population analysis was performed by fluorescence flow cytometry.

DONOR TISSUE FEATURES

- Male donor, 68 years
- Glioblastoma multiforme, tumour stage IV
- Additional donor history available on request

CELL CHARACTERISTICS

Batch number:	11-1606
Vial content:	0.5x10 ⁶ cells
Appearance:	Dependent upon culture conditions
Seeding density:	13,500 cells/cm ² (adherent culture), 2x10 ⁵ cells/ml (suspension culture)
Culture medium:	AvantiCell medium (GM-HCM-01) recommended
Recovery from frozen:	>90%
Mycoplasma test:	Negative (by luminescent-based mycoplasma assay)
Virus tests:	Negative for HIV1, HIV2, HAV, HBV, HCV, HTLV1/2 (by real time PCR)
Other tests:	Negative for yeast, fungus, bacteria



Cell morphology. DAPI stained neurospheres in suspension culture fixed in situ (Magnification: x40).

FLOW CYTOMETRY CELL ANALYSIS

Cell Marker	Target Description	Population Positive*
CD33	Cancer stem cell marker	Negative
CD56	Neuronal progenitor cell marker	67%
A2B5	Glial progenitor cell marker	Negative%

*Percentage of cells with fluorescence greater than the isotype control background

USES AND RESTRICTIONS

- Store at -150°C. Once thawed do not re-freeze
- For research use ONLY — not suitable for *in vitro* diagnostic use or human or animal treatment
- Potential biohazard — handle with care