

Human Primary Dermal Fibroblast Cells

A primary cell isolate with application in cell-based screening and life science research

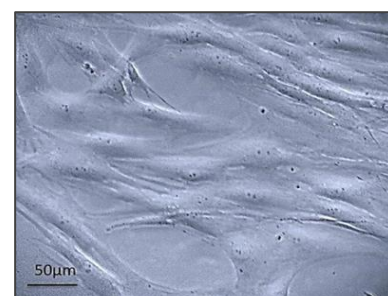
The primary cell isolate was prepared from human tissue obtained with full ethical permission. Skin tissue was dissected to obtain explants of dermis which were seeded into tissue culture treated dishes. Cell outgrowth from explanted tissue was promoted using customised medium optimized for primary human dermal fibroblast cells. A fibroblast population was isolated using FSP-1 immuno-magnetic selection. Propagated cells were banked and cryopreserved under liquid nitrogen. The cell population was analysed by fluorescence-activated flow cytometry.

DONOR TISSUE FEATURES

- Female donor, BMI 28, 32 years
- Additional donor history available on request

CELL CHARACTERISTICS

Batch number:	15-2503
Vial content:	0.5x10 ⁶ cells
Appearance:	Monolayer of spindle-shaped cells
Seeding density:	4,000 cells/cm ²
Culture medium:	AvantiCell medium (DF-HNM-01) recommended
Recovery from frozen:	95%
Population doubling:	1-2 days
Mycoplasma test:	Negative (by real-time PCR mycoplasma assay)
Virus tests:	HIV1, HIV2, HBV, HCV (Serological screening of donor)
Other tests:	Yeast, fungus (Negative)



Cell morphology. Cells in culture were photographed using a phase contrast microscope. (Magnification: x50)

FLOW CYTOMETRY CELL ANALYSIS

Cell Marker	Target Description	Population Positive*
Ecto-5' nucleotidase	Interstitial fibroblast marker	98.89%
α-smooth muscle actin (α-SMA)	Myofibroblast marker	46.82%

*Percentage of cells with fluorescence greater than the isotype control background

USES AND RESTRICTIONS

- Store at -150°C. Once thawed do not re-freeze
- For research use ONLY — not suitable for *in vitro* diagnostic use or human or animal treatment
- Potential biohazard — handle with care

Leaders in Cell Culture